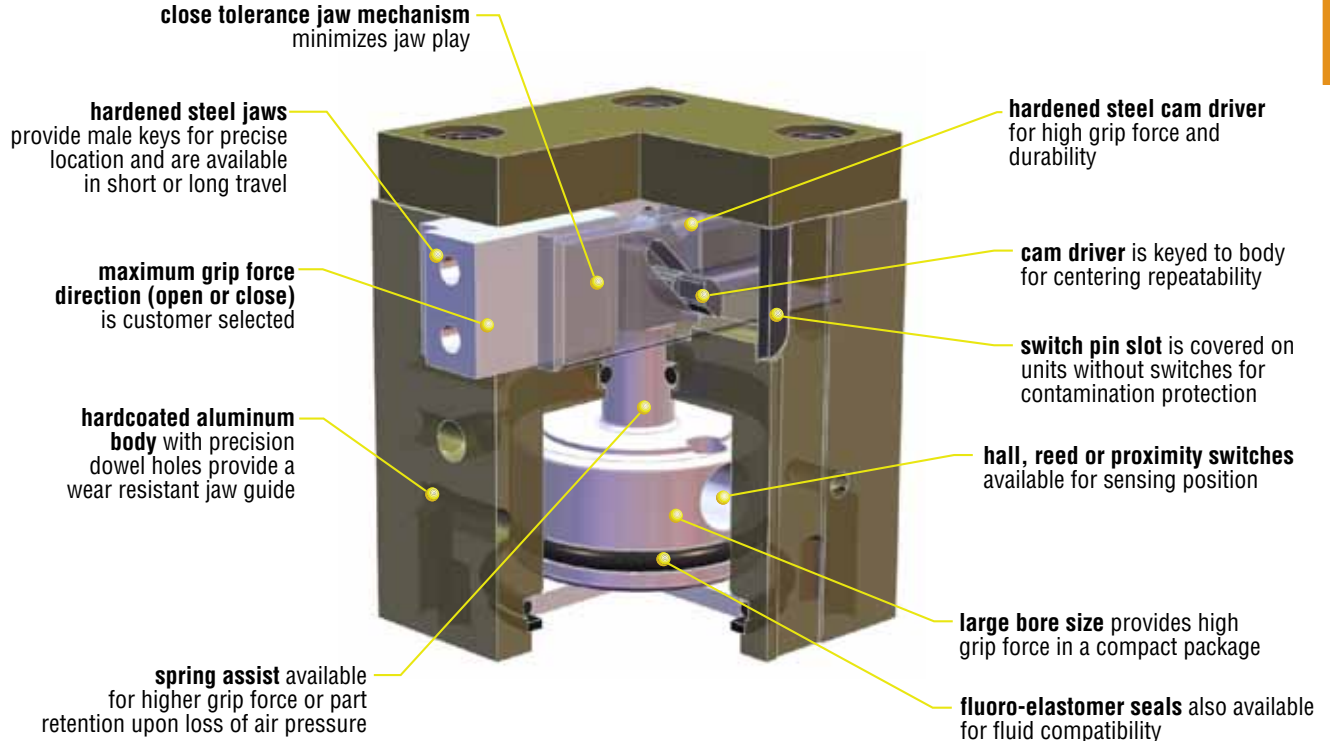


GRD

**LOW PROFILE WITH
MINIMAL JAW PLAY**



GRD

Major Benefits

- High grip force to weight ratio
- Compact size
- Two body styles with a total of four sizes available in both imperial and metric versions
- Spring assist on open or close available in two different forces
- One day shipping
- 10 million cycles minimum rated life with standard seals (includes spring assist units)

Industry Uses

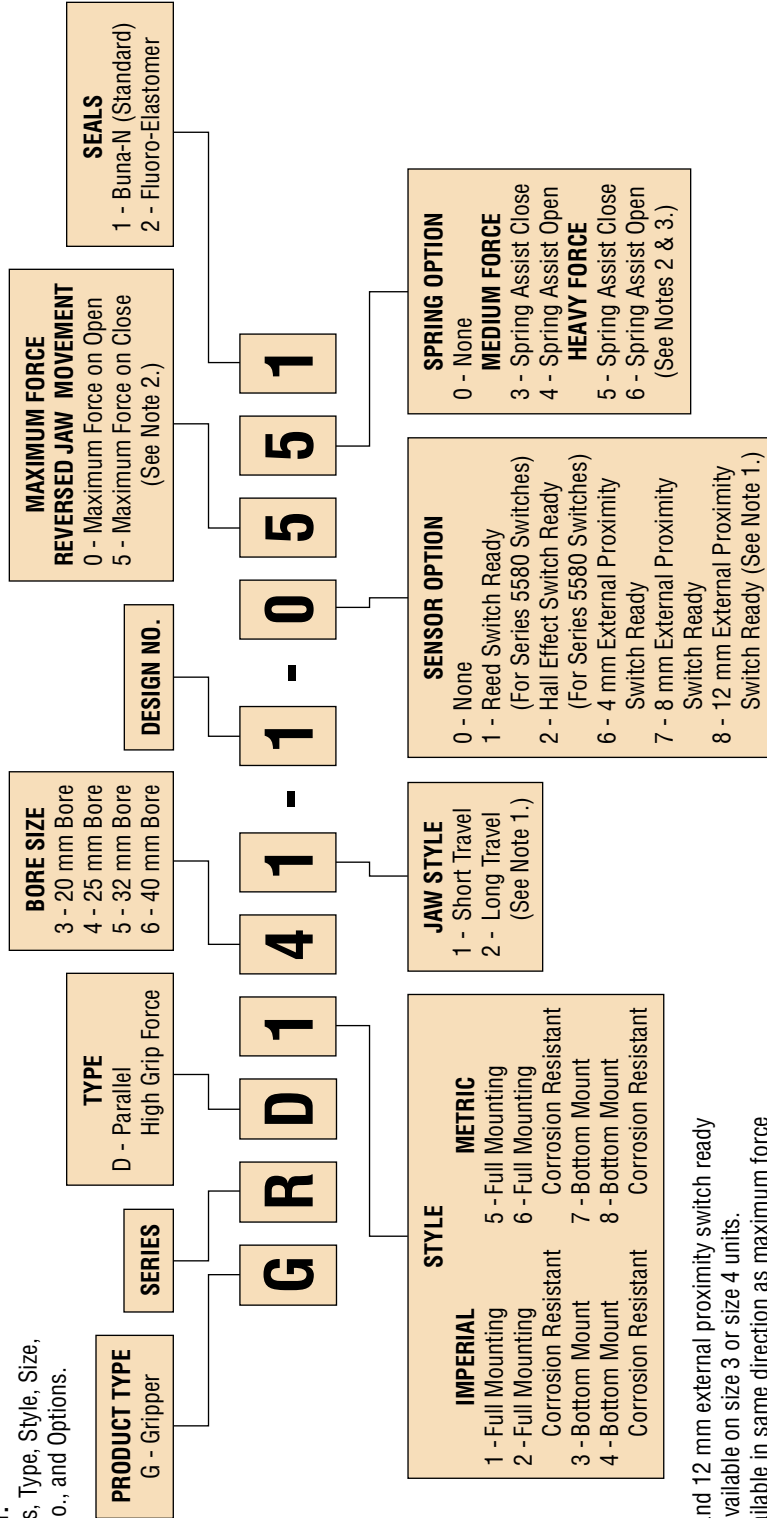
- Assembly machine builders
- Cosmetics
- Batteries
- Light bulb manufacturing
- Plumbing fixtures
- Semiconductor

ORDERING DATA: SERIES GRD PARALLEL GRIPPERS

GRD

TO ORDER SPECIFY:

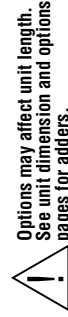
Product Type, Series, Type, Style, Size, Jaw Style, Design No., and Options.



UNIQUE GRIPPERS ARE AVAILABLE. SEE PAGES 4-179 TO 4-204.

NOTES:

- 1) Long jaw travel and 12 mm external proximity switch ready options are not available on size 3 or size 4 units.
- 2) Spring assist available in same direction as maximum force movement only. (-x04x, -x06x, -x53x, -x55x) See option pages.
- 3) Spring assist options (-xx3x, -xx4x, -xx5x & -xx6x) are available with full mounting style units only and see page 4-24 for dimensional changes (GRD1xx, GRD2xx, GRD5xx & GRD6xx).
- 4) All switches and kits must be ordered separately. See option pages.



Options may affect unit length. See unit dimension and options pages for adders.

SWITCH MOUNTING KIT FOR SERIES 5580 SWITCHES

PART NO.	DESCRIPTION
61494	Switch Mounting Kit

Each mounting kit contains 1 proximity switch bracket and 1 mounting screw.

12 mm THREADED PROXIMITY SWITCHES

PART NO.	DESCRIPTION
15561-001	NPN (Sink) 3 meter cable
15561-002	PNP (Source) 3 meter cable
15561-003	VAC Solid State, 3 meter cable

SERIES 5580 HALL EFFECT SWITCHES

PART NO.	DESCRIPTION
55803-1-02	NPN (Sink) 4.5-24 VDC, 2 meter cable
55804-1-02	PNP (Source) 4.5-24 VDC, 2 meter cable
55823-1	NPN (Sink) 4.5-24 VDC, Quick Connect
55824-1	PNP (Source) 4.5-24 VDC, Quick Connect

8 mm THREADED PROXIMITY SWITCHES

PART NO.	DESCRIPTION
51422-005-02	NPN (Sink) 5-30 VDC, 2 meter cable
51422-006-02	PNP (Source) 5-30 VDC, 2 meter cable

SERIES 5580 REED SWITCHES

PART NO.	DESCRIPTION
55802-1-02	NPN (Sink) or PNP (Source) 4.5-24 VDC, 2 meter cable
55822-1	NPN (Sink) or PNP (Source) 4.5-24 VDC, Quick Connect

4 mm ROUND PROXIMITY SWITCHES

PART NO.	DESCRIPTION
18430-001-02	NPN (Sink) 10-30 VDC, 2 meter cable
18430-002-02	PNP (Source) 10-30 VDC, 2 meter cable

ENGINEERING DATA: SERIES GRD PARALLEL GRIPPERS

SPECIFICATIONS	SERIES GRD
OPERATING PRESSURE	
STANDARD UNIT	30 psi min to 100 psi max [2 bar min to 7 bar max] air
MEDIUM SPRING ASSIST UNIT	60 psi min to 100 psi max [4 bar min to 7 bar max] air
HEAVY SPRING ASSIST UNIT	72 psi min to 100 psi max [5 bar min to 7 bar max] air
OPERATING TEMPERATURE	-20°F to +180°F [-28°C to +82°C]
RATED LIFE	10 million cycles minimum with standard seals (including spring assist units)
GRIP REPEATABILITY	Within ±0.002 in [±0.05 mm] of original position
CYCLE TIME	See tables below
LUBRICATION	Factory lubricated for rated life
MAINTENANCE	Field repairable

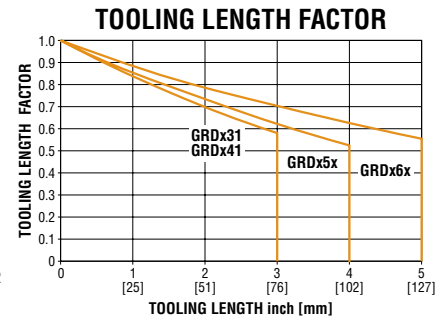
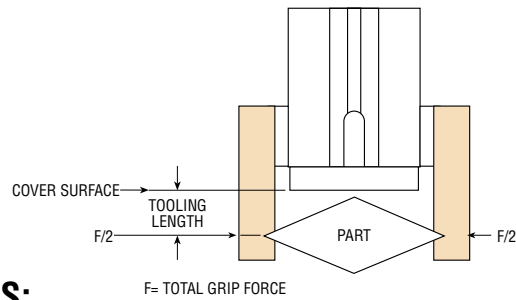
MODEL NO.	MIN. TOTAL JAW TRAVEL		TOTAL GRIP FORCE AT 87 psi [6 bar]				CLOSE OR OPEN TIME 87 psi [6 bar] sec	MINIMUM OPERATING PRESSURE		DISPLACEMENT		GRIP FORCE FACTOR G _F			
			GRIPPER WEIGHT		GRIPPER WEIGHT							MAXIMUM DIRECTION		MINIMUM DIRECTION	
	in	mm	lb	N	lb	kg		psi	bar	in ³	cm ³	IMPERIAL	METRIC	IMPERIAL	METRIC
GRDx31	.147	3.75	33	147	0.25	0.11	.02	30	2	.07	1	.38	24.5	.33	21.3
GRDx41	.294	7.5	40	178	0.38	0.17	.02	30	2	.12	2	.46	29.7	.42	27.1
GRDx51	.275	7.0	87	387	0.66	0.30	.04	30	2	.25	4	1.00	64.5	.90	58.1
GRDx52	.462	11.75	54	240	0.72	0.33	.04	30	2	.25	4	.62	40.0	.55	35.5
GRDx61	.383	9.75	136	604	1.41	0.64	.06	30	2	.54	9	1.56	100.6	1.42	91.6
GRDx62	.659	16.75	91	406	1.56	0.71	.06	30	2	.54	9	1.05	67.7	.95	61.3

MODEL NO.	HEAVY SPRING							MEDIUM SPRING						
	S _F SPRING GRIP FORCE		GRIPPER WEIGHT		CLOSE OR OPEN TIME 87 psi [6 bar] in sec			S _F SPRING GRIP FORCE		GRIPPER WEIGHT		CLOSE OR OPEN TIME 87 psi [6 bar] in sec		
	lb	N	lb	kg	AGAINST SPRING	WITH SPRING	ONLY	lb	N	lb	kg	AGAINST SPRING	WITH SPRING	ONLY
	GRDx31	15	67	0.34	0.16	.03	.02	.03	12	55	0.33	0.15	.03	.02
GRDx41	20	87	0.54	0.25	.03	.02	.03	16	71	0.53	0.24	.03	.02	.04
GRDx51	42	187	0.97	0.44	.06	.03	.05	35	155	0.94	0.43	.05	.04	.07
GRDx52	26	117	1.03	0.47	.06	.03	.05	22	96	1.00	0.45	.05	.04	.07
GRDx61	66	294	2.03	0.92	.10	.05	.08	55	242	1.98	0.90	.08	.06	.10
GRDx62	44	196	2.19	0.99	.10	.05	.08	37	163	2.14	0.97	.08	.06	.10

TOOLING LENGTH FACTOR

Tooling should be designed so that the grip point is as close to the cover surface as possible. As the grip point is moved away from the body surface, the applied moment causes jaw friction to increase, resulting in reduced effective grip force. The Grip Force Factor (G_F) values given above are for zero tooling length (body surface).

SIZING AND APPLICATION ASSISTANCE
See PHD Product Sizing Catalog for specific and complete sizing information.
Online sizing assistance is available at: www.phdinc.com/apps/sizing



GRIP FORCE CALCULATION EQUATIONS:

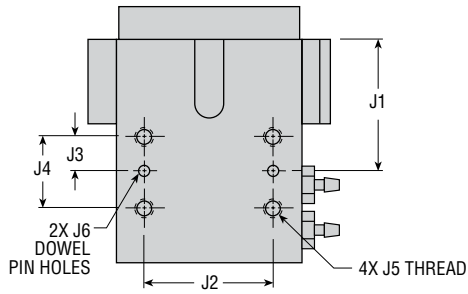
IMPERIAL:

TOTAL GRIP FORCE [lb] = (Pressure [psi] x G_F) x Tooling Length Factor
 TOTAL GRIP FORCE WITH SPRINGS [lb] = ((Pressure [psi] x G_F) ± S_F [lb]) x Tooling Length Factor

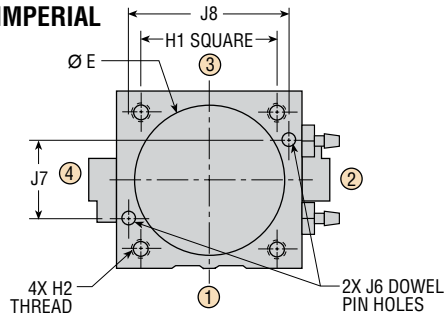
METRIC:

TOTAL GRIP FORCE [N] = (Pressure [bar] x G_F) x Tooling Length Factor
 TOTAL GRIP FORCE WITH SPRINGS [N] = ((Pressure [bar] x G_F) ± S_F [N]) x Tooling Length Factor

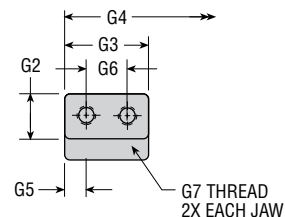
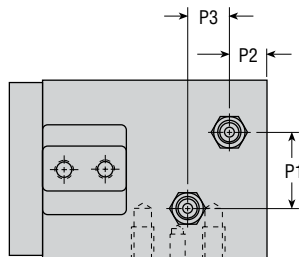
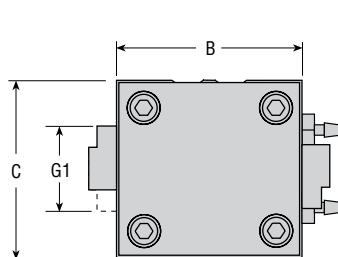
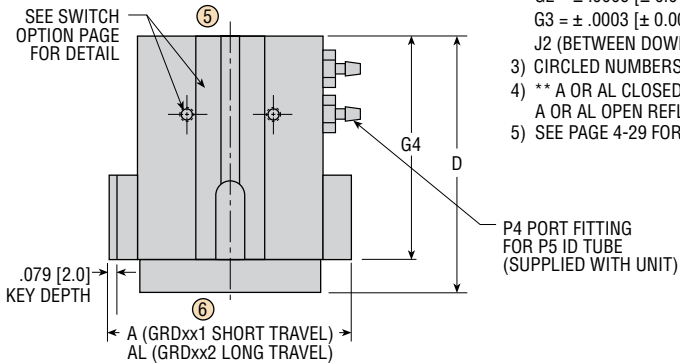
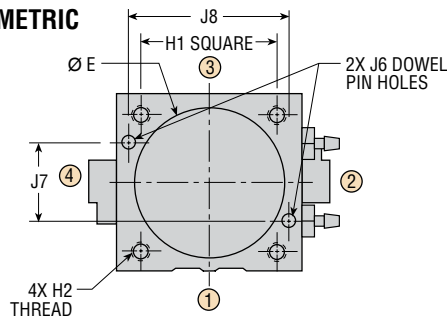
DIMENSIONS: SERIES GRD GRIPPERS, FULL MOUNTING



IMPERIAL



METRIC

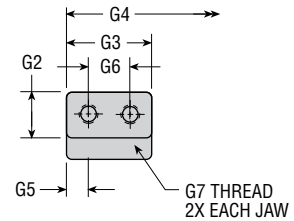
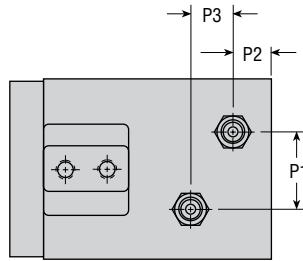
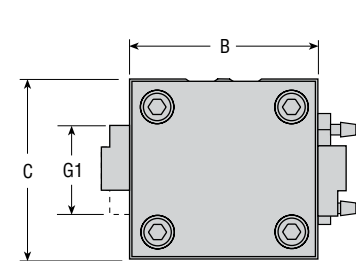
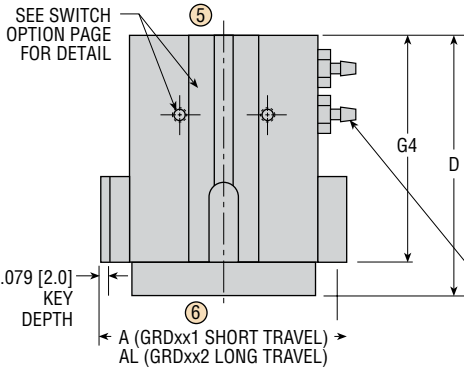
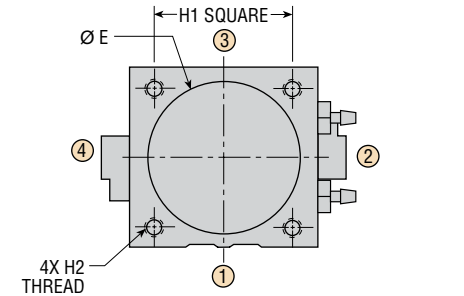


LETTER DIM.	MODEL NO.							
	GRDx31		GRDx41		GRDx5x		GRDx6x	
	in	mm	in	mm	in	mm	in	mm
NOMINAL JAW TRAVEL								
SHORT	.187	4.75	.335	8.5	.315	8	.423	10.75
LONG	—	—	—	—	.502	12.75	.699	17.75
A CLOSED **	1.368	34.75	1.851	47.0	1.870	47.5	2.392	60.75
A OPEN **	1.515	38.5	2.145	54.5	2.145	54.5	2.775	70.5
AL CLOSED **	—	—	—	—	2.412	61.25	2.933	74.5
AL OPEN **	—	—	—	—	2.874	73.0	3.592	91.25
B	1.141	29.0	1.457	37.0	1.654	42.0	2.126	54.0
C	1.063	27.0	1.378	35.0	1.575	40.0	1.969	50.0
D	1.922	48.75	1.909	48.5	2.303	58.5	2.972	75.5
E*	.866 x .079 DP	22.0 x 2.0 DP	1.104 x .079 DP	28.0 x 2.0 DP	1.341 x .082 DP	34.0 x 2.0 DP	1.656 x .087 DP	42.0 x 2.25 DP
G1	.551	14.0	.551	14.0	.787	20.0	1.024	26.0
G2*	.2756	7.0	.2756	7.0	.3940	10.0	.5118	13.0
G3*	.4921	12.5	.4921	12.5	.748	19.0	.9842	25.0
G4	1.664	42.25	1.651	42.0	2.006	51.0	2.616	66.5
G5	.121	3.0	.121	3.0	.186	4.5	.180	6.5
G6	.250	6.5	.250	6.5	.375	10.0	.625	12.0
G7	6-32 x .280 DP	M3 x 0.5 x 6.0 DP	6-32 x .280 DP	M3 x 0.5 x 6.0 DP	8-32 x .320 DP	M4 x 0.7 x 8.0 DP	10-24 x .380 DP	M5 x 0.8 x 10.0 DP
H1	.846	21.5	1.102	28.0	1.220	31.0	1.535	39.0
H2	4-40 x .220 DP	M3 x 0.5 x 6.0 DP	8-32 x .330 DP	M4 x 0.7 x 8.0 DP	10-24 x .375 DP	M5 x 0.8 x 10.0 DP	1/4-20 x .500 DP	M6 x 1.0 x 12.0 DP
J1	.886	22.5	.906	23.0	1.201	30.5	1.614	41.0
J2*	.8465	21.50	1.1024	28.00	1.2205	31.00	1.5354	39.0
J3	.276	7.0	.296	7.5	.315	8.0	.394	10.0
J4	.551	14.0	.591	15.0	.630	16.0	.787	20.0
J5	4-40 x .220 DP	M3 x 0.5 x 6.0 DP	8-32 x .330 DP	M4 x 0.7 x 8.0 DP	10-24 x .281 DP	M5 x 0.8 x 7.5 DP	1/4-20 x .375 DP	M6 x 1.0 x 9.0 DP
J6*	.0634	2.0	.1259	3.0	.1259	3.0	.1884	4.0
J7*	.5118	13.00	.7480	19.00	.8661	22.00	1.0630	27.00
J8*	.9843	25.00	1.2205	31.00	1.4173	36.00	1.8504	47.0
P1	.492	12.5	.492	12.5	.669	17.0	.669	17.0
P2	.326	8.25	.332	8.5	.333	8.5	.392	10.0
P3	.492	12.5	.472	12.0	.531	13.5	.669	17.0
P4	10-32	M5 x 0.8	10-32	M5 x 0.8	10-32	M5 x 0.8	10-32	M5 x 0.8
P5	1/16	3.0	1/16	3.0	1/16	3.0	1/16	3.0

NOTES:

- 1) NUMBERS IN [] ARE mm
- 2) *TOLERANCE FOR DIMENSIONS: E = ± .005 [± 0.13]
 G2 = ± .0006 [± 0.015] SIZE 3x, 4x G2 = ± .0007 [± 0.018] SIZE 5x G2 = ± .0008 [± 0.020] SIZE 6x
 G3 = ± .0003 [± 0.007]
 J2 (BETWEEN DOWEL PIN HOLES) = ± .0008 [± 0.02] J6 = ± .0005 [H7] J7 AND J8 = ± .0008 [± 0.02]
- 3) CIRCLED NUMBERS INDICATE SURFACE POSITIONS
- 4) ** A OR AL CLOSED REFLECTS THE LARGEST POSSIBLE CLOSED DIMENSION.
 A OR AL OPEN REFLECTS THE SMALLEST POSSIBLE OPEN DIMENSION.
- 5) SEE PAGE 4-29 FOR DIMENSIONAL CHANGES FOR SPRING OPTIONS -xx3x, -xx4x, -xx5x, -xx6x.

DIMENSIONS: SERIES GRD GRIPPERS, BOTTOM MOUNTING



LETTER DIM.	MODEL NO.							
	GRDx31		GRDx41		GRDx5x		GRDx6x	
	in	mm	in	mm	in	mm	in	mm
NOMINAL JAW TRAVEL								
SHORT	.187	4.75	.335	8.5	.315	8	.423	10.75
LONG	—	—	—	—	.502	12.75	.699	17.75
A CLOSED**	1.368	34.75	1.851	47.0	1.870	47.5	2.392	60.75
A OPEN**	1.515	38.5	2.145	54.5	2.145	54.5	2.775	70.5
AL CLOSED**	—	—	—	—	2.412	61.25	2.933	74.5
AL OPEN**	—	—	—	—	2.874	73.0	3.592	91.25
B	1.141	29.0	1.457	37.0	1.654	42.0	2.126	54.0
C	1.063	27.0	1.378	35.0	1.575	40.0	1.969	50.0
D	1.922	48.75	1.909	48.5	2.303	58.5	2.972	75.5
E*	.866 x .079 DP	22.0 x 2.0 DP	1.104 x .079 DP	28.0 x 2.0 DP	1.341 x .082 DP	34.0 x 2.0 DP	1.656 x .087 DP	42.0 x 2.25 DP
G1	.551	14.0	.551	14.0	.787	20.0	1.024	26.0
G2*	.2756	7.0	.2756	7.0	.3940	10.0	.5118	13.0
G3*	.4921	12.5	.4921	12.5	.7480	19.0	.9842	25.0
G4	1.664	42.25	1.651	42.0	2.006	51.0	2.616	66.5
G5	.121	3.0	.121	3.0	.186	4.5	.180	6.5
G6	.250	6.5	.250	6.5	.375	10.0	.625	12.0
G7	6-32 x .280 DP	M3 x 0.5 x 6.0 DP	6-32 x .280 DP	M3 x 0.5 x 6.0 DP	8-32 x .320 DP	M4 x 0.7 x 8.0 DP	10-24 x .380 DP	M5 x 0.8 x 10.0 DP
H1	.846	21.5	1.102	28.0	1.220	31.0	1.535	39.0
H2	4-40 x .220 DP	M3 x 0.5 x 6.0 DP	8-32 x .330 DP	M4 x 0.7 x 8.0 DP	10-24 x .375 DP	M5 x 0.8 x 10.0 DP	1/4-20 x .500 DP	M6 x 1.0 x 12.0 DP
P1	.492	12.5	.492	12.5	.669	17.0	.669	17.0
P2	.326	8.25	.332	8.5	.333	8.5	.392	10.0
P3	.492	12.5	.472	12.0	.531	13.5	.669	17.0
P4	10-32	M5 x 0.8	10-32	M5 x 0.8	10-32	M5 x 0.8	10-32	M5 x 0.8
P5	1/16	3.0	1/16	3.0	1/16	3.0	1/16	3.0

NOTES:

- 1) NUMBERS IN [] ARE mm
- 2) *TOLERANCE FOR DIMENSIONS: E = ± .005 [± 0.13]
G2 = ± .0006 [± 0.015] SIZE 3x, 4x G2 = ± .0007 [± 0.018] SIZE 5x G2 = ± .0008 [± 0.020] SIZE 6x
G3 = ± .0003 [± 0.007]
- 3) CIRCLED NUMBERS INDICATE SURFACE POSITIONS
- 4) ** A OR AL CLOSED REFLECTS THE LARGEST POSSIBLE CLOSED DIMENSION.
A OR AL OPEN REFLECTS THE SMALLEST POSSIBLE OPEN DIMENSION.
- 5) SEE PAGE 4-29 FOR DIMENSIONAL CHANGES FOR SPRING OPTIONS -xx3x, -xx4x, -xx5x, -xx6x.

P4 PORT FITTING FOR P5 ID TUBE (SUPPLIED WITH UNIT)

All dimensions are reference only unless specifically toleranced.

SENSOR OPTIONS & ACCESSORIES: SERIES GRD

1 REED SWITCH READY

2 HALL EFFECT SWITCH READY

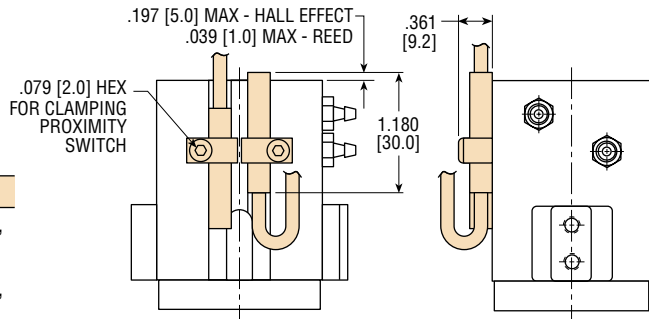
Options -1 and -2 equip the gripper with magnets for use with PHD Series 5580 Reed and Hall Effect Switches. See Switches and Sensors section for complete switch specifications. Switches and mounting kits must be ordered separately.

REED SWITCHES

PART NO.	COLOR	DESCRIPTION
55802-1-02	White	NPN (Sink) or PNP (Source) 4.5-24 VDC, 2 meter cable
55822-1	White	NPN (Sink) or PNP (Source) 4.5-24 VDC, Quick Connect

HALL EFFECT SWITCHES

PART NO.	COLOR	DESCRIPTION
55803-1-02	Yellow	NPN (Sink) 4.5-24 VDC, 2 meter cable
55804-1-02	Red	PNP (Source) 4.5-24 VDC, 2 meter cable
55823-1	Yellow	NPN (Sink) 4.5-24 VDC, Quick Connect
55824-1	Red	PNP (Source) 4.5-24 VDC, Quick Connect



PART NO.	DESCRIPTION
61494	Switch Mounting Kit
63549-02	2 meter Cordset with Quick Connect
63549-05	5 meter Cordset with Quick Connect

Each mounting kit contains 1 proximity switch bracket and 1 mounting screw.

GRD

6 4 mm EXTERNAL PROXIMITY SWITCH READY (-6xxx)

This option equips the gripper with a cover and hardware to provide for the mounting of 4 mm round metal sensing proximity switches. The user is required to design and mount targets for the switch to sense. See Switches and Sensors section for complete switch specifications.

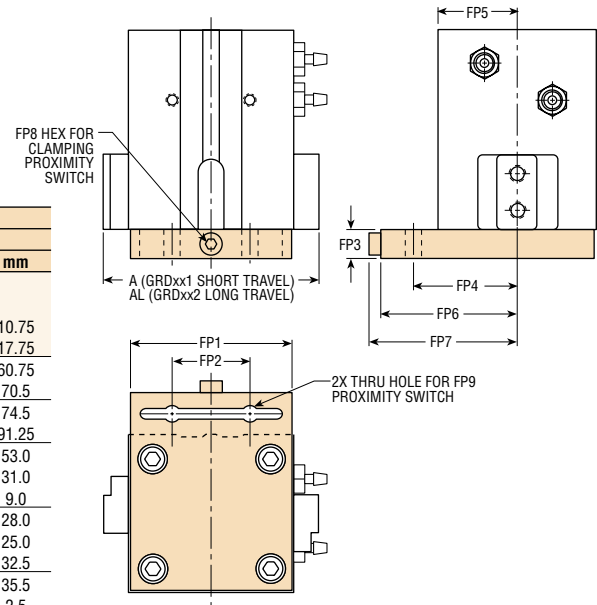
LETTER DIM.	MODEL NO.							
	GRDx31		GRDx41		GRDx5x		GRDx6x	
	in	mm	in	mm	in	mm	in	mm
NOMINAL JAW TRAVEL								
SHORT	.187	4.75	.335	8.5	.315	8.0	.423	10.75
LONG	—	—	—	—	.502	12.75	.699	17.75
A CLOSED*	1.368	34.75	1.851	47.0	1.870	47.5	2.392	60.75
A OPEN*	1.515	38.5	2.145	54.5	2.145	54.5	2.775	70.5
AL CLOSED*	—	—	—	—	2.412	61.25	2.933	74.5
AL OPEN*	—	—	—	—	2.874	73.0	3.592	91.25
FP1	1.122	28.5	1.417	36.0	1.614	41.0	2.087	53.0
FP2	.551	14.0	.630	16.0	.748	19.0	1.220	31.0
FP3	.256	6.5	.256	6.5	.295	7.5	.354	9.0
FP4	.650	16.5	.807	20.5	.906	23.0	1.102	28.0
FP5	.532	13.5	.689	17.5	.788	20.0	.984	25.0
FP6	.846	21.5	.984	25.0	1.083	27.5	1.280	32.5
FP7	.964	24.5	1.102	28.0	1.201	30.5	1.398	35.5
FP8	.098	2.5	.098	2.5	.098	2.5	.098	2.5
FP9	4 mm	4 mm	4 mm	4 mm	4 mm	4 mm	4 mm	4 mm

NOTES:

- 1) PROXIMITY SWITCHES MUST BE ORDERED SEPARATELY
- 2) HAND TIGHTEN CLAMP SHCS UNTIL PROXIMITY SWITCHES NO LONGER MOVE
- 3) * A CLOSED REFLECTS THE LARGEST POSSIBLE CLOSED DIMENSION. A OPEN REFLECTS THE SMALLEST POSSIBLE OPEN DIMENSION.

4 mm ROUND PROXIMITY SWITCHES

PART NO.	DESCRIPTION
18430-001-02	NPN (Sink) 2 meter cable
18430-002-02	PNP (Source) 2 meter cable



SENSOR OPTIONS & ACCESSORIES: SERIES GRD

7 8 mm EXTERNAL PROXIMITY SWITCH READY (-7xxx)

This option equips the gripper with a cover and hardware to provide for the mounting of 8 mm threaded metal sensing proximity switches. The user is required to design and mount targets for the switch to sense. See Switches and Sensors section for complete switch specifications.

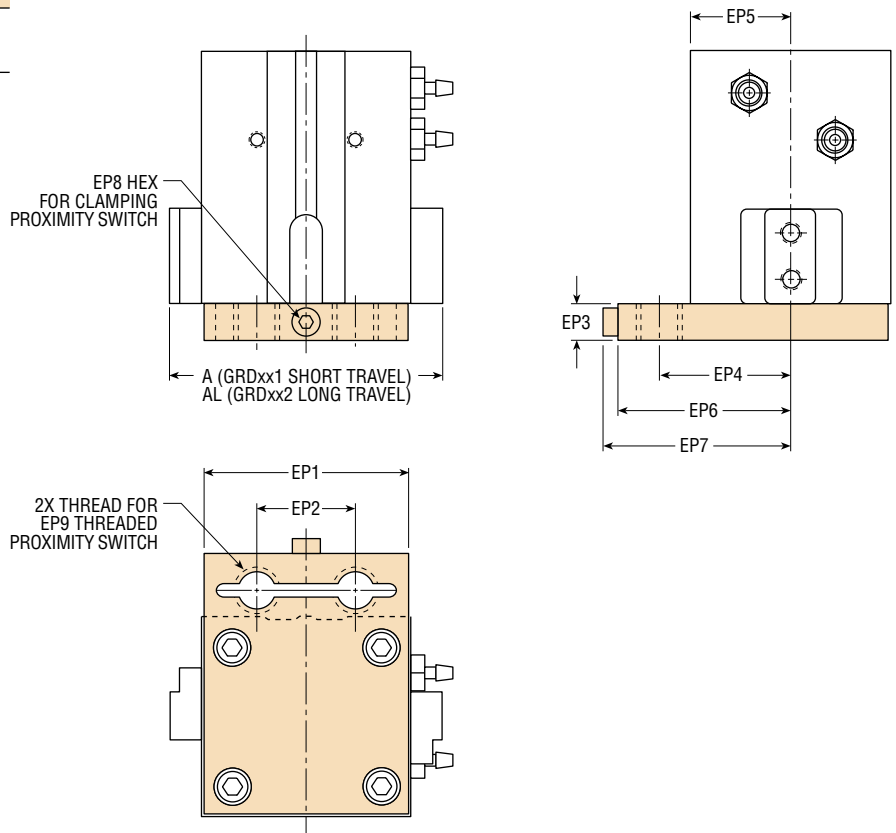
LETTER DIM.	MODEL NO.							
	GRDx31		GRDx41		GRDx5x		GRDx6x	
	in	mm	in	mm	in	mm	in	mm
NOMINAL JAW TRAVEL								
SHORT	.187	4.75	.335	8.5	.315	8.0	.423	10.75
LONG	—	—	—	—	.502	12.75	.699	17.75
A CLOSED*	1.368	34.75	1.851	47.0	1.870	47.5	2.392	60.75
A OPEN*	1.515	38.5	2.145	54.5	2.145	54.5	2.775	70.5
AL CLOSED*	—	—	—	—	2.412	61.25	2.933	74.5
AL OPEN*	—	—	—	—	2.874	73.0	3.592	91.25
EP1	1.122	28.5	1.417	36.0	1.614	41.0	2.087	53.0
EP2	.551	14.0	.630	16.0	.748	19.0	1.220	31.0
EP3	.256	6.5	.256	6.5	.295	7.5	.354	9.0
EP4	.718	18.25	.866	22.0	.984	25.0	1.180	30.0
EP5	.532	13.5	.689	17.5	.788	20.0	.984	25.0
EP6	.935	23.75	1.063	27.0	1.279	32.5	1.418	36.0
EP7	1.053	26.75	1.181	30.0	1.397	35.5	1.535	39.0
EP8	.098	2.5	.098	2.5	.098	2.5	.098	2.5
EP9	M8 x 1.0	M8 x 1.0	M8 x 1.0	M8 x 1.0	M8 x 1.0	M8 x 1.0	M8 x 1.0	M8 x 1.0

NOTES:

- 1) PROXIMITY SWITCHES MUST BE ORDERED SEPARATELY
- 2) HAND TIGHTEN CLAMP SHCS UNTIL PROXIMITY SWITCHES NO LONGER MOVE
- 3)* A CLOSED REFLECTS THE LARGEST POSSIBLE CLOSED DIMENSION. A OPEN REFLECTS THE SMALLEST POSSIBLE OPEN DIMENSION.

8 mm THREADED PROXIMITY SWITCHES

PART NO.	DESCRIPTION
51422-005-02	NPN (Sink) 2 meter cable
51422-006-02	PNP (Source) 2 meter cable



GRD

All dimensions are reference only unless specifically toleranced.

www.phdinc.com/grd • (800) 624-8511

SENSOR OPTIONS & ACCESSORIES: SERIES GRD

8

12 mm EXTERNAL PROXIMITY SWITCH READY (-8xxx)

This option equips the gripper with a cover and hardware to provide for the mounting of 12 mm threaded metal sensing proximity switches. The user is required to design and mount targets for the switch to sense. See the example below. See Switches and Sensors section for complete switch specifications.

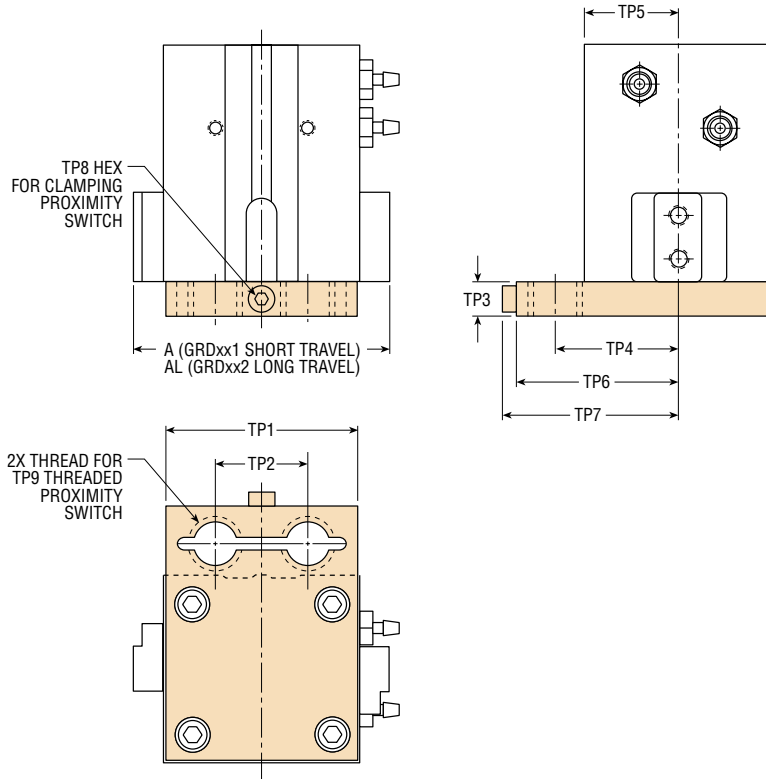
LETTER DIM.	MODEL NO.			
	GRDx5x		GRDx6x	
	mm			
NOMINAL JAW TRAVEL				
SHORT	.315	8.0	.423	10.75
LONG	.502	12.75	.699	17.75
A CLOSED*	1.870	47.5	2.392	60.75
A OPEN*	2.145	54.5	2.775	70.5
AL CLOSED*	2.412	61.25	2.933	74.5
AL OPEN*	2.874	73.0	3.592	91.25
TP1	1.614	41.0	2.087	53.0
TP2	.748	19.0	1.220	31.0
TP3	.295	7.5	.354	9.0
TP4	1.063	27.0	1.260	32.0
TP5	.788	20.0	.984	25.0
TP6	1.378	35.0	1.574	40.0
TP7	1.496	38.0	1.692	43.0
TP8	.098	2.5	.098	2.5
TP9	M12 x 1.0	M12 x 1.0	M12 x 1.0	M12 x 1.0

NOTES:

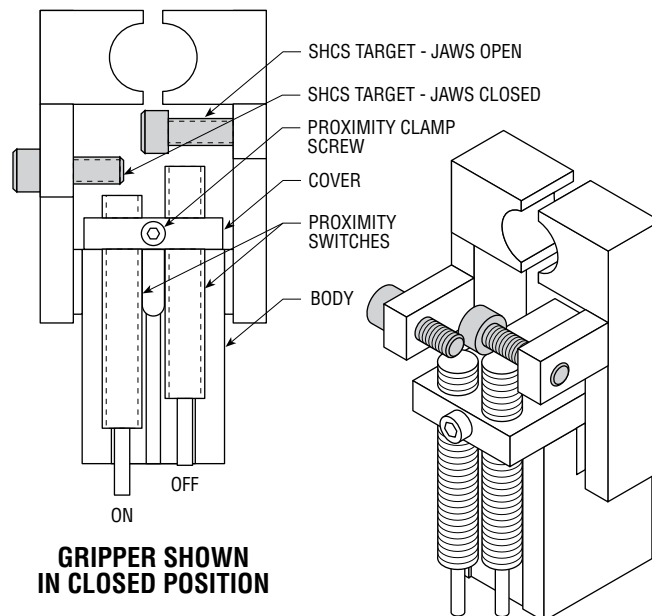
- 1) PROXIMITY SWITCHES MUST BE ORDERED SEPARATELY
- 2) HAND TIGHTEN CLAMP SHCS UNTIL PROXIMITY SWITCHES NO LONGER MOVE
- 3) * A CLOSED REFLECTS THE LARGEST POSSIBLE CLOSED DIMENSION. A OPEN REFLECTS THE SMALLEST POSSIBLE OPEN DIMENSION.

12 mm THREADED PROXIMITY SWITCHES

PART NO.	DESCRIPTION
15561-001	NPN (Sink) 3 meter cable
15561-002	PNP (Source) 3 meter cable
15561-003	VAC Solid State, 3 meter cable



EXAMPLE OF TARGET CREATED BY CUSTOMER FOR EXTERNAL PROXIMITY SWITCHES



GRIPPER SHOWN IN CLOSED POSITION

All dimensions are reference only unless specifically tolerated.

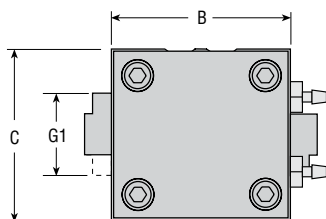
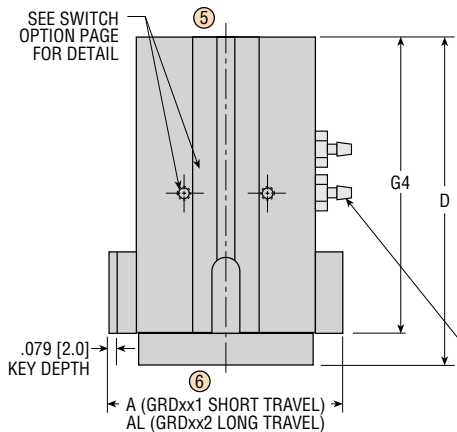
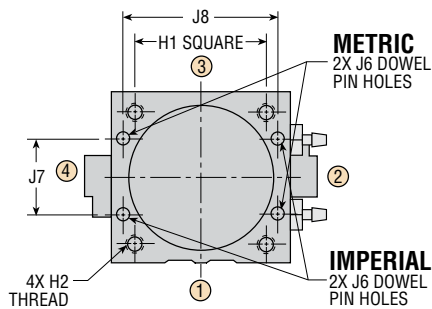
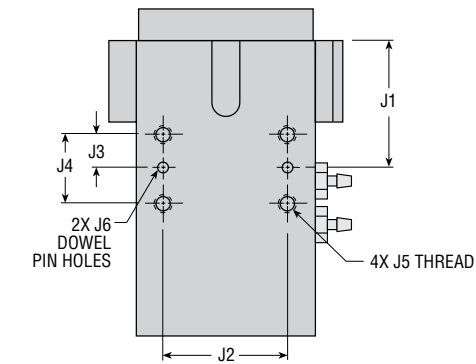
SPRING OPTIONS: SERIES GRD PARALLEL GRIPPERS

3 & 4 MEDIUM FORCE SPRING ASSIST (-xx3x) or (-xx4x)

5 & 6 HEAVY FORCE SPRING ASSIST (-xx5x) or (-xx6x)

(Full mounting style only) Springs can maintain spring grip force if air pressure is lost or increase grip force in one specific direction when used with air pressure. They can open or close the gripper without air pressure. Spring life in excess of 10 million cycles can be expected. For minimum operating pressures and spring forces, see table on page 4-35.

NOTE: Spring assist option may affect dimensions.

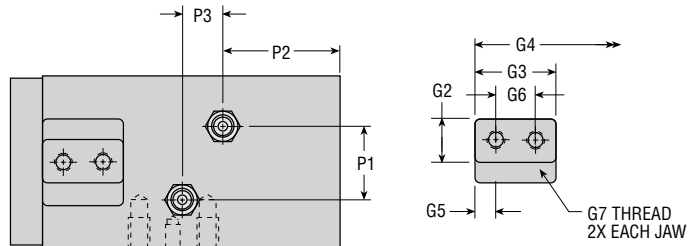


LETTER DIM.	MODEL NO.							
	GRDx3x		GRDx4x		GRDx5x		GRDx6x	
	in	mm	in	mm	in	mm	in	mm
NOMINAL JAW TRAVEL								
SHORT	.187	4.75	.335	8.5	.315	8	.423	10.75
LONG	—	—	—	—	.502	12.75	.699	17.75
A CLOSED **	1.368	34.75	1.851	47.0	1.870	47.5	2.392	60.75
A OPEN **	1.515	38.5	2.145	54.5	2.145	54.5	2.775	70.5
AL CLOSED **	—	—	—	—	2.412	61.25	2.933	74.5
AL OPEN **	—	—	—	—	2.874	73.0	3.592	91.25
B	1.141	29.0	1.457	37.0	1.654	42.0	2.126	54.0
C	1.063	27.0	1.378	35.0	1.575	40.0	1.969	50.0
D	2.500	63.5	2.599	66.0	3.149	80.0	4.094	104.0
G1	.551	14.0	.551	14.0	.787	20.0	1.024	26.0
G2*	.2756	7.0	.2756	7.0	.3940	10.0	.5118	13.0
G3*	.4921	12.5	.4921	12.5	.748	19.0	.9842	25.0
G4	2.242	57.0	2.341	59.5	2.852	72.5	3.738	95.0
G5	.121	3.0	.121	3.0	.186	4.5	.180	6.5
G6	.250	6.5	.250	6.5	.375	10.0	.625	12.0
G7	6-32 x .280 DP	M3 x 0.5 x 6.0 DP	6-32 x .280 DP	M3 x 0.5 x 6.0 DP	8-32 x .328 DP	M4 x 0.7 x 8.0 DP	10-24 x .380 DP	M5 x 0.8 x 10.0 DP
H1	.846	21.5	1.102	28.0	1.220	31.0	1.535	39.0
H2	4-40 x .220 DP	M3 x 0.5 x 6.0 DP	8-32 x .330 DP	M4 x 0.7 x 8.0 DP	10-24 x .375 DP	M5 x 0.8 x 10.0 DP	1/4-20 x .500 DP	M6 x 1.0 x 12.0 DP
J1	.886	22.5	.906	23.0	1.201	30.50	1.614	41.0
J2*	.8465	21.50	1.1024	28.00	1.2205	31.00	1.5354	39.00
J3	.276	7.0	.296	7.5	.315	8.0	.394	10.0
J4	.551	14.0	.591	15.0	.630	16.0	.787	20.0
J5	4-40 x .220 DP	M3 x 0.5 x 6.0 DP	8-32 x .330 DP	M4 x 0.7 x 8.0 DP	10-24 x .281 DP	M5 x 0.8 x 7.5 DP	1/4-20 x .375 DP	M6 x 1.0 x 9.0 DP
J6*	.0634	2.0	.1259	3.0	.1259	3.0	.1884	4.0
J7*	.5118	13.00	.7480	19.00	.8661	22.00	1.0630	27.00
J8*	.9843	25.00	1.2205	31.00	1.4173	36.00	1.8504	47.00
P1	.492	12.5	.492	12.5	.669	17.0	.669	17.0
P2	.904	23.0	1.022	26.0	1.179	26.0	1.514	38.5
P3	.492	12.5	.472	12.0	.531	13.5	.669	17.0
P4	10-32	M5 x 0.8	10-32	M5 x 0.8	10-32	M5 x 0.8	10-32	M5 x 0.8
P5	1/16	3.0	1/16	3.0	1/16	3.0	1/16	3.0

NOTES:

- 1) NUMBERS IN [] ARE mm
- 2) *TOLERANCE FOR DIMENSIONS:
 G2 = ± .0006 [± 0.015] SIZE 3x, 4x G2 = ± .0007 [± 0.018] SIZE 5x G2 = ± .0008 [± 0.020] SIZE 6x
 G3 = ± .0003 [± 0.007] J2 (BETWEEN DOWEL PIN HOLES) = ± .0008 [± 0.02]
 J6 = ± .0005 [H7] J7 AND J8 = ± .0008 [± 0.02]
- 3) CIRCLED NUMBERS INDICATE SURFACE POSITIONS
- 4) **A CLOSED REFLECTS THE LARGEST POSSIBLE CLOSED DIMENSION.
 A OPEN REFLECTS THE SMALLEST POSSIBLE OPEN DIMENSION.

P4 PORT FITTING FOR P5 ID TUBE (SUPPLIED WITH UNIT)

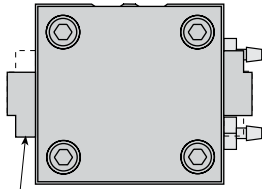


All dimensions are reference only unless specifically tolerated.

MAXIMUM FORCE OPTIONS: SERIES GRD GRIPPERS

5 MAXIMUM FORCE IN CLOSE DIRECTION (-x5xx)

This option changes the maximum force of the jaws from the open direction to the closed direction. This switches or changes the jaw offset 180° from standard.



NOTE JAW OFFSET ON THIS SIDE.

DIMENSIONS REMAIN THE SAME. SEE DIMENSION PAGES.

